



Caledonian

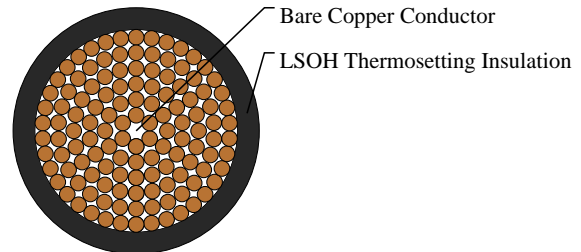
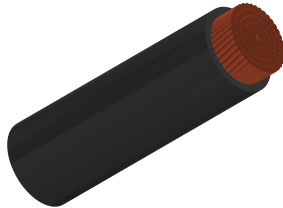
BS 7211 LSOH Sheathed Cables

www.caledonian-cables.com

marketing@caledonian-cables.com

6701B Single Core Cable

4/0AWG



APPLICATIONS

6701B is equivalent to harmonized code H07Z-K, these cables are designed for the internal wiring of switchboards and distributor boards with an alternating nominal voltage up to 1000 Volts or a direct voltage up to 750 volts. Generally install in pipes or ducts and internal wiring of appliances with maximum operating temperature of 90° C, and generally in areas (such as public and government buildings) where smoke and toxic fumes may cause a threat to life and equipment. The cables produce no corrosive gasses when burnt which is particularly important where electronic equipment is installed.

FIRE PERFORMANCE

| | |
|-----------------------------------|---------------------------|
| Flame retardant | IEC 60332-1 |
| Smoke density | EN 50268 / IEC 61034 |
| Corrosiveness of combustion gases | EN 50267-2-2, IEC 60754-2 |
| Flame test: flame-retardant | EN 50265-2-1, IEC 60332-1 |

VOLTAGE RATING

450/750V

CABLE CONSTRUCTION

Fine bare copper strands
Strands to IEC 60228 CI-5
Thermosetting core insulation type EI5
LSOH - low smoke, zero halogen

COLOUR CODE

Insulation Colour: Green/Yellow, Black, Blue, Brown, Red, White, Yellow, Grey, Violet, Grey, Orange, Pink

Electrical Properties

Working voltage: 450/750V

Test voltage: 2500V

Minimum bending radius: 5 x Ø

Flexing temperature: -15° C to +90° C



Caledonian

BS 7211 LSOH Sheathed Cables

www.caledonian-cables.com

marketing@caledonian-cables.com

Static temperature: -40° C to +90° C

Insulation resistance: 10 MΩ x km

DIMENSION AND PARAMETERS

| No. of Cores × Cross- sectional Area | AWG Size | Nominal Insulation Thickness | Nom. Overall Diameter | Nominal Copper Weight | Approx. Weight | Min. Insulation Resistance at 90 °C |
|--|-------------|------------------------------------|--------------------------|--------------------------|-------------------|---|
| No. × mm ² | | mm | mm | kg/km | kg/km | MΩ × km |
| 1x120 | 4/0(614/24) | 1.6 | 16.7-20.9 | 1152 | 1200 | 0.0029 |